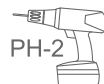
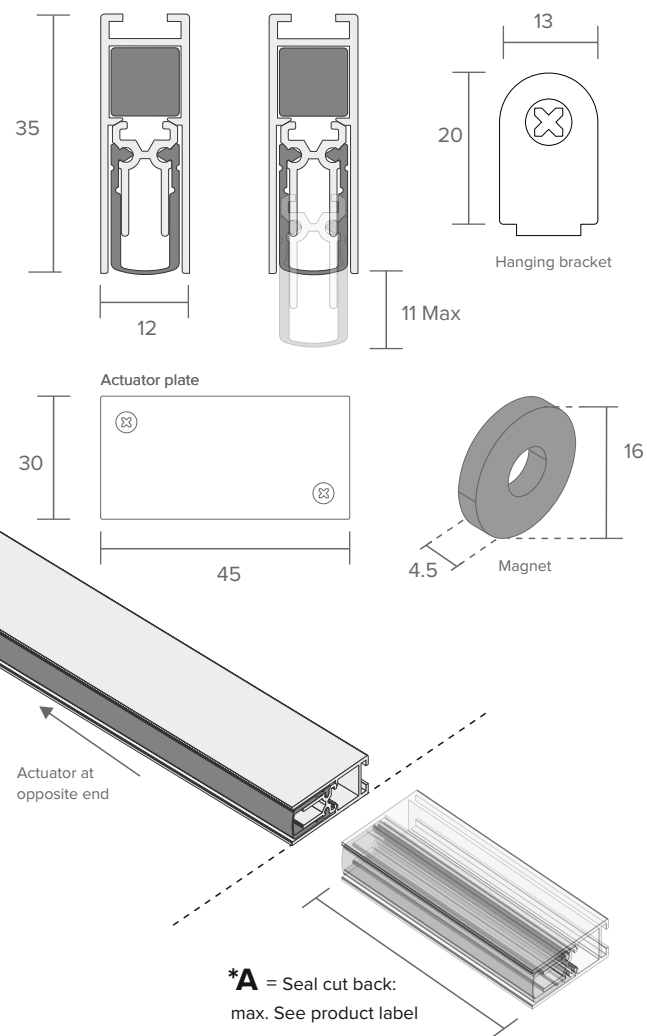


Tools

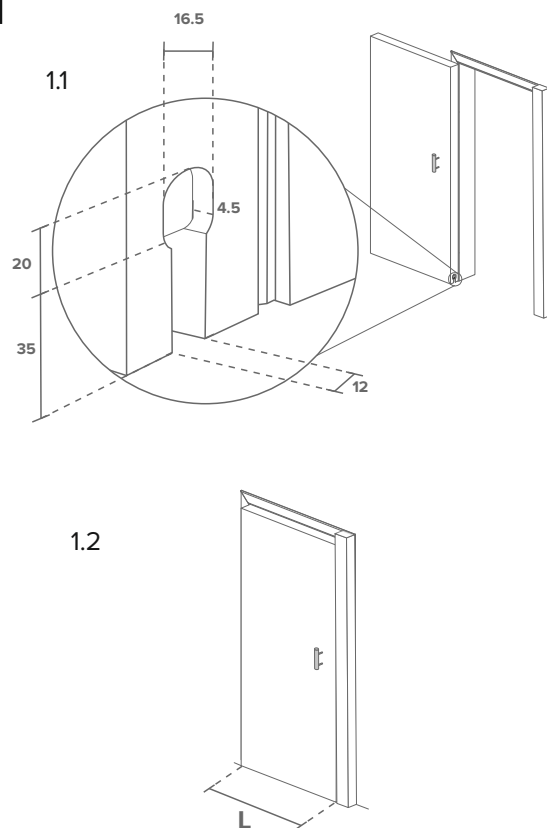


Included:
1 x Schall-Ex® Slide & Lock M-12 WS drop seal
2 x hanging brackets
4 x Fixing screws
1 x Magnet and actuator plate

All dimensions in mm



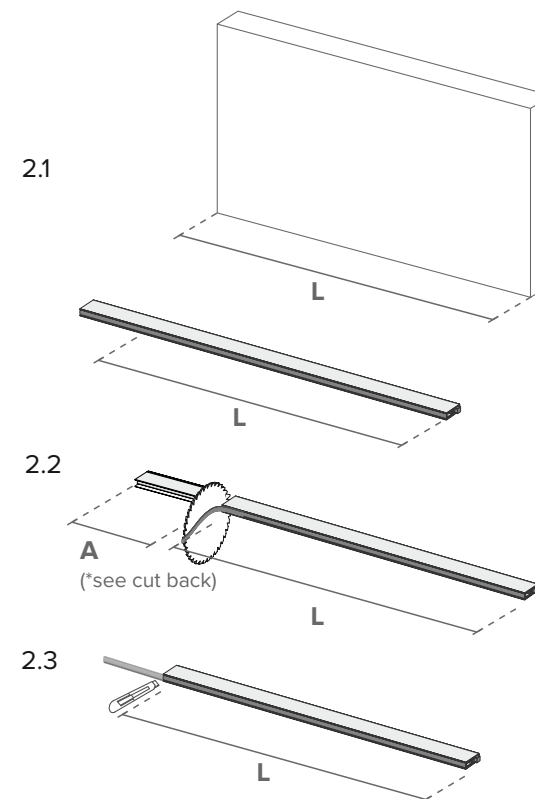
1



1.1 A rebate needs to be cut into the bottom edge of the door to house the seal. Using a router, cut a 35x12mm gap along the length of the door. On the closing edge, make sure to rout a 20x16.5mm hole that is 4.5mm deep to house the hanging bracket and the magnet.

1.2 Measure width of door (L).

2



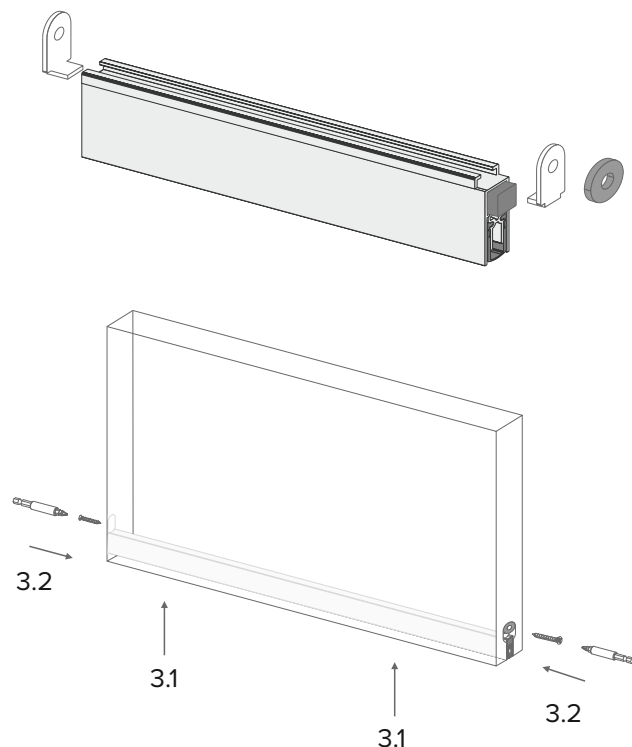
2.1 The seal needs to be the same size as door width (L). Measure the seal from actuator end, making sure to mark the cutting point on the seal.

2.2 Partially remove the silicone gasket to cut the seal at door width (L). Please ensure to consider max cut back (A).

2.3 Replace silicone gasket and cut to size with scissors or a stanley knife.

Schall-Ex® Slide & Lock M-12 WS Fitting Instructions

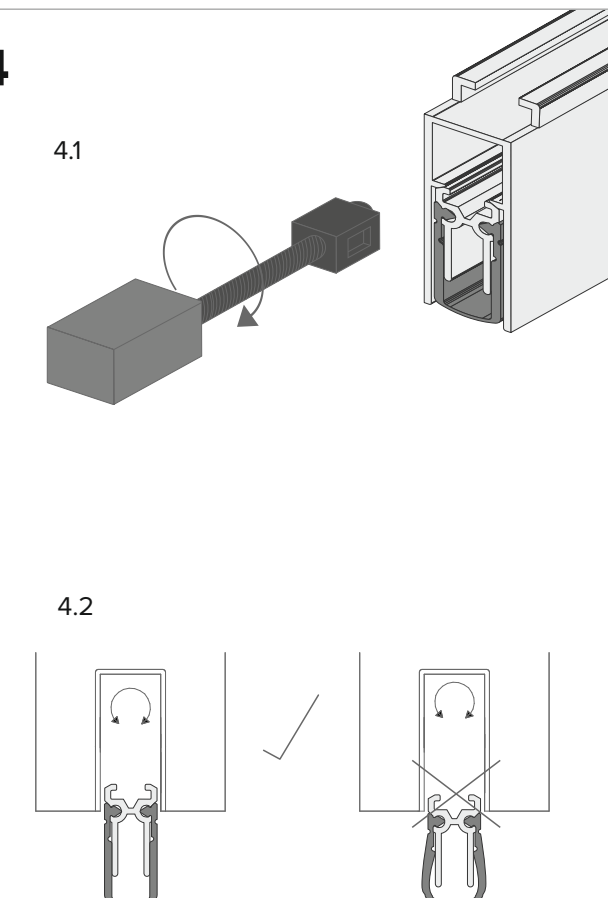
3



3.1 Place the seal into the rebate in the bottom of the door.

3.2 Using the screws provided, fit the hanging brackets and magnet fixing the seal into place, ensuring the magnet is showing on the closing edge.

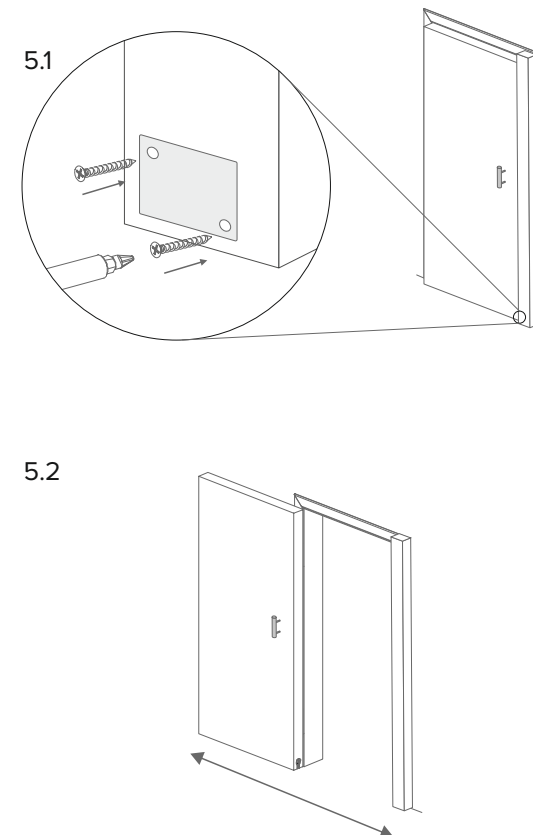
4



4.1 Seal adjustment may be required so that the seal drops as in 4.2. To adjust the seal, pull the actuator out by hand and twist clockwise to reduce seal travel or anti-clockwise to increase seal travel.

4.2 Please take the following diagrams into account, the seal should be fully contacting the floor but not over adjusted so that the seal is bowing.

5



5.1 Screw fix the metal contact plate to the inside edge of the door stop at the correct height so that when the door is closed the magnet will strike the plate.

5.2 Open and close door to test seal drop and magnetic contact. Repeat step 4 if further adjustment is required.