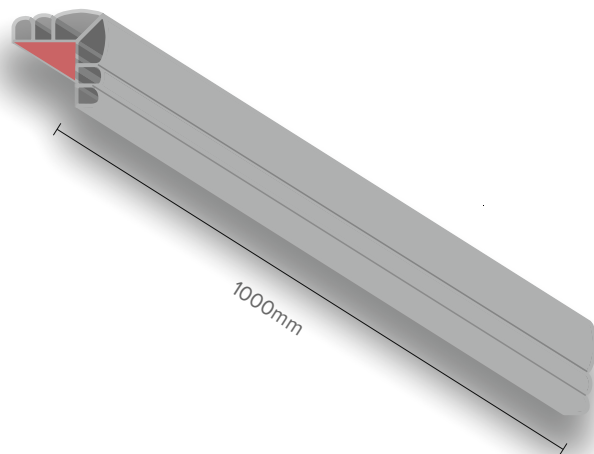
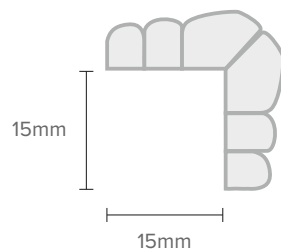


Tools

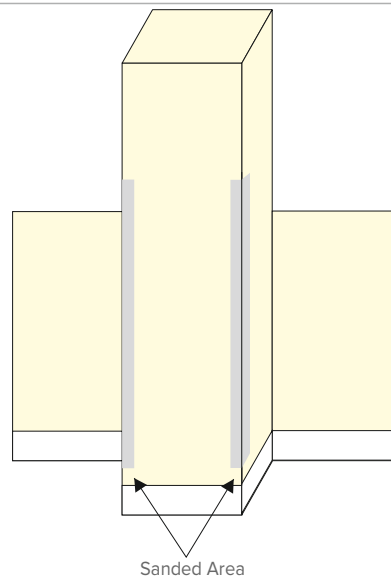
Included:
1 x NORcorner

All dimensions in mm

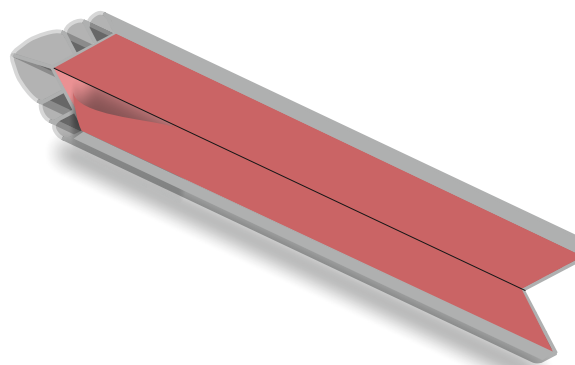


1

1.1



1.2

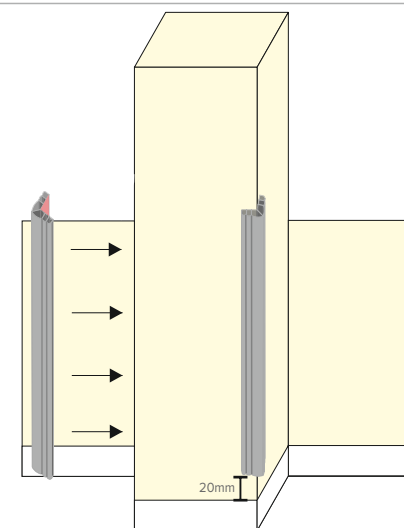


1.1 Sand slightly for improved adhesion. Thoroughly clean and dry the area that the NORcorner is to be fitted ensuring it is completely free from grease and dust.

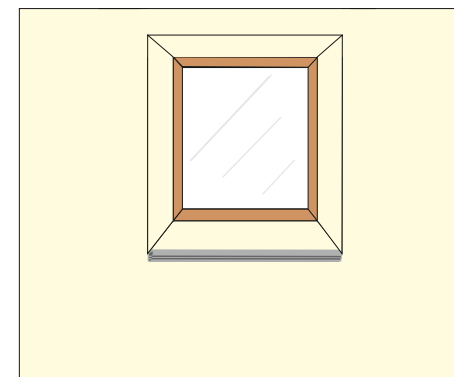
1.2 Peel off adhesive backing.

2

2.1



2.2



2.1 Place the strip 20mm above the floor or 20mm above skirting board. Once in place press firmly on both sides for 5 minutes then don't touch for 15 minutes

2.2 This product can be fitted vertical or horizontal to almost any surface.