

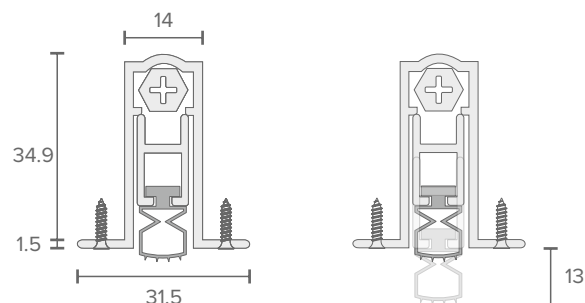
NOR810T Fitting Instructions

Tools

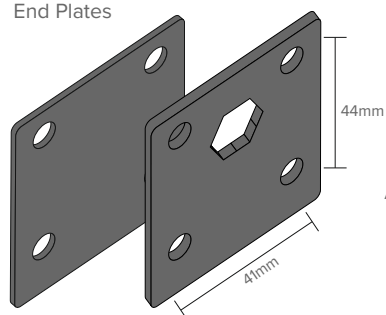


Includes:
1 x NOR810T Automatic drop seal
1 x Fixing screw pack
2 x End plates
1 x No 10 Flat head screw

All dimensions in mm



End Plates

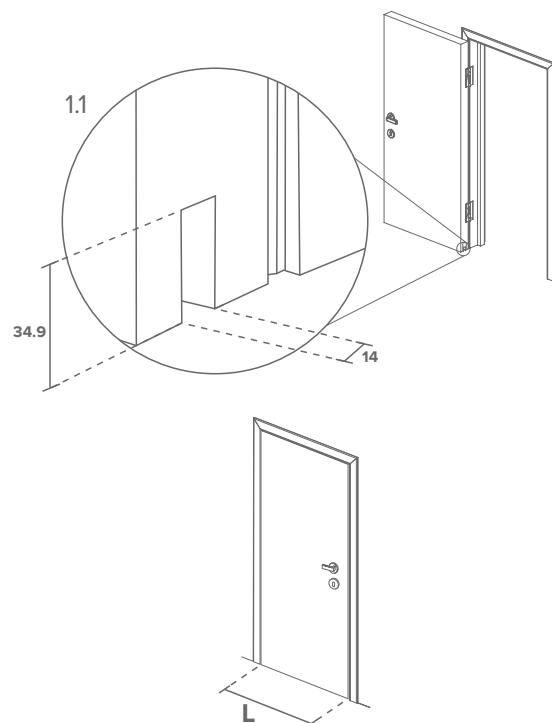


Actuator end plate

(A) * Cut back table

Length (mm)	Maximum cut back (mm)
505mm	89mm
610 - 1016mm	127mm
1219mm	254mm

1

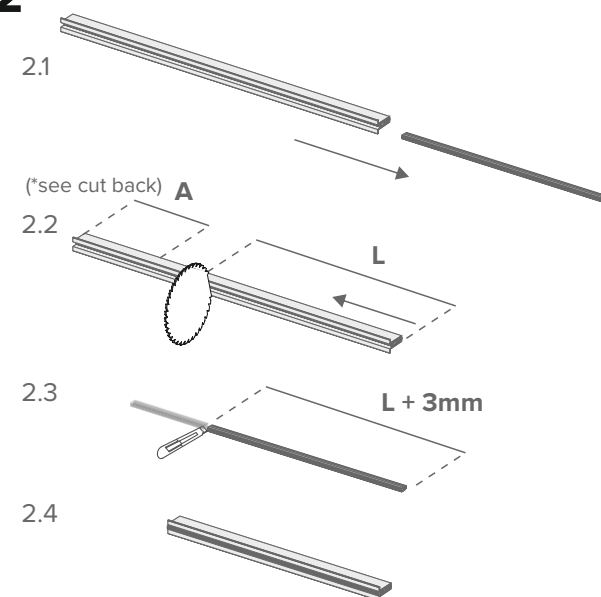


1.1 If installed, remove door from hinges lay on its side and restrain firmly. Using a router machine mortise the bottom of door a groove 34.9 x 14 mm the full width of the door.

Optional - The fixing T-section may be recessed into the bottom of the door at 1.5mm x 10.5mm either side of groove.

1.2 Measure length of door (L).

2



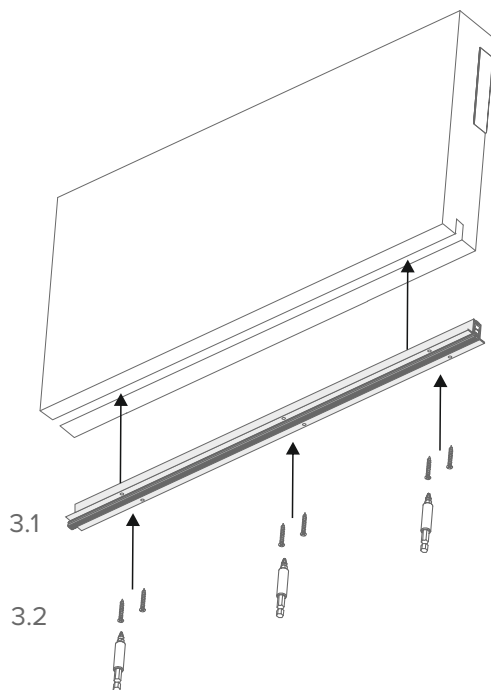
2.1 Completely remove silicon gasket and place to one side.

2.2 Using length (L) measure and mark seal from the actuator end. Ensuring the internal drop bar is flush with the outer carrier at the actuator end, cut the seal at length (L) making sure to consider maximum cut back length (A). Remove any rough metal using a file and ensure product is dust and dirt free.

2.3 Using a sharp knife cut the silicon gasket at length (L + 3mm).

2.4 Replace silicon gasket and adjust to allow 1.5mm at each end.

3

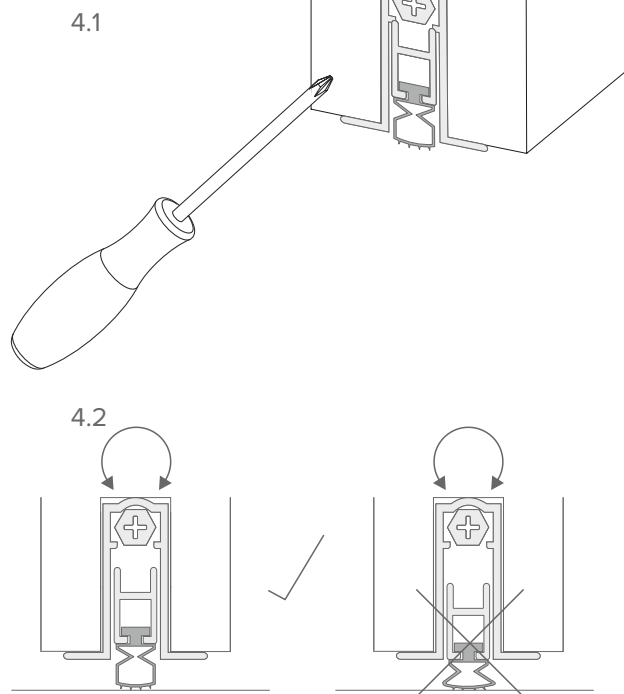


3.1 Install the seal into groove with actuator at the hinge side.

3.2 Screw into place using fixing screws supplied and Install door leaf.

Note - When used with wood frames or soft material, fix the No 10 flat head screw to the frame jamb at the point where the actuator contacts the jamb.

4

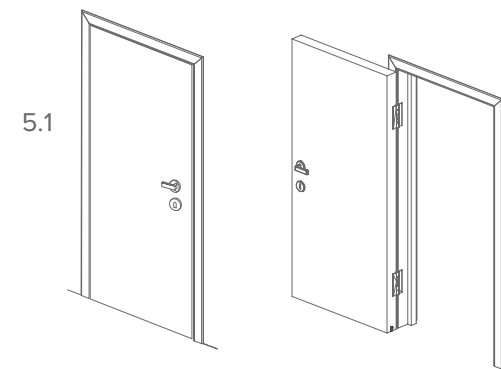


4.1 To adjust the seal use a screwdriver.

4.2 Rotate actuator clockwise to reduce drop distance or anti clockwise to increase drop distance. Take care not to over compress the seal.

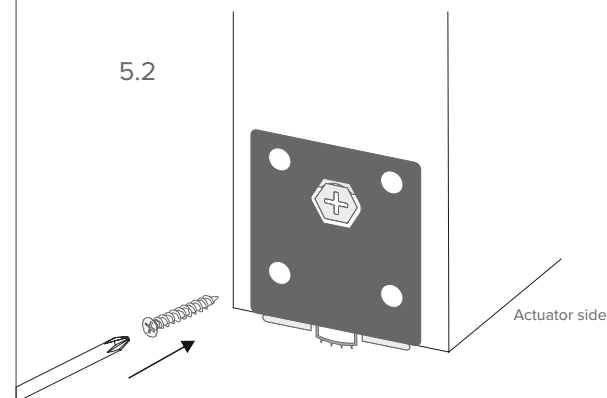
4.3 Seal should touch the floor. When correctly set the seal should just grip a 90gms sheet of paper allowing to remove without tearing the paper.

5



5.1

5.2



5.1 Open and close door to test drop. Repeat step **4.3** and test again to see if further adjustment is required.

5.2 Complete the installation by fixing the end cover plates to both sides of the door.

For copy fitting instructions visit norsound.com/fitting