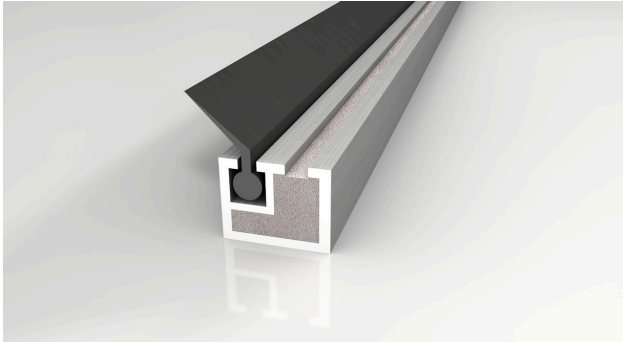


N30 Intumescent

Fire & Smoke by Sealmaster

NORSEAL
SPECIALIST SEAL SOLUTIONS

Call us on **+44 (0)1661 830088**
Email us at **sales@norseal.co.uk**



Specification

Application

Single and double leaf doors

Fixing

Rout-in

Length (mm)

1050, 2100

Material

Aluminium alloy including intumescent material

Size (mm)

9.5x7.5

Benefits

Easy fit

BS 476 part 20:22

Protects against fire

Protects against smoke